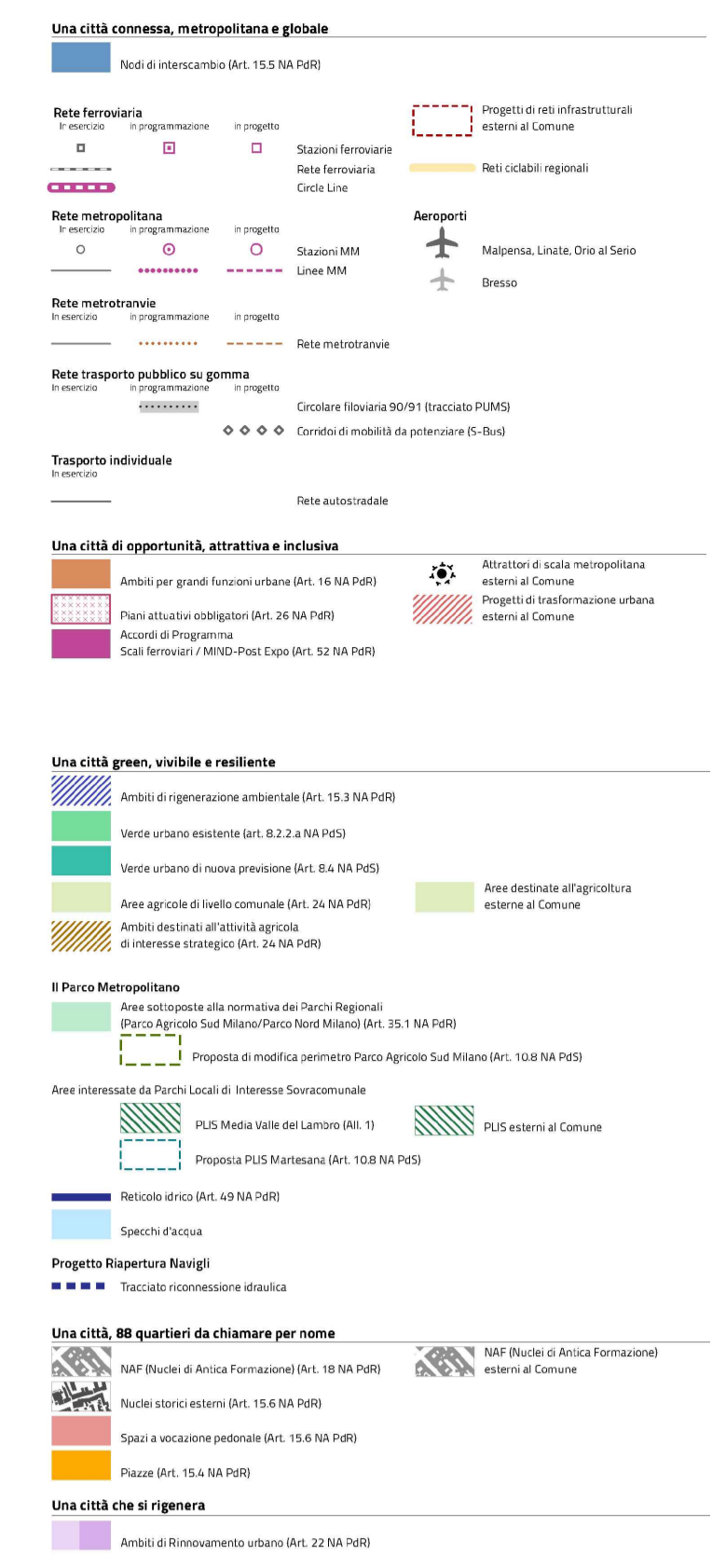
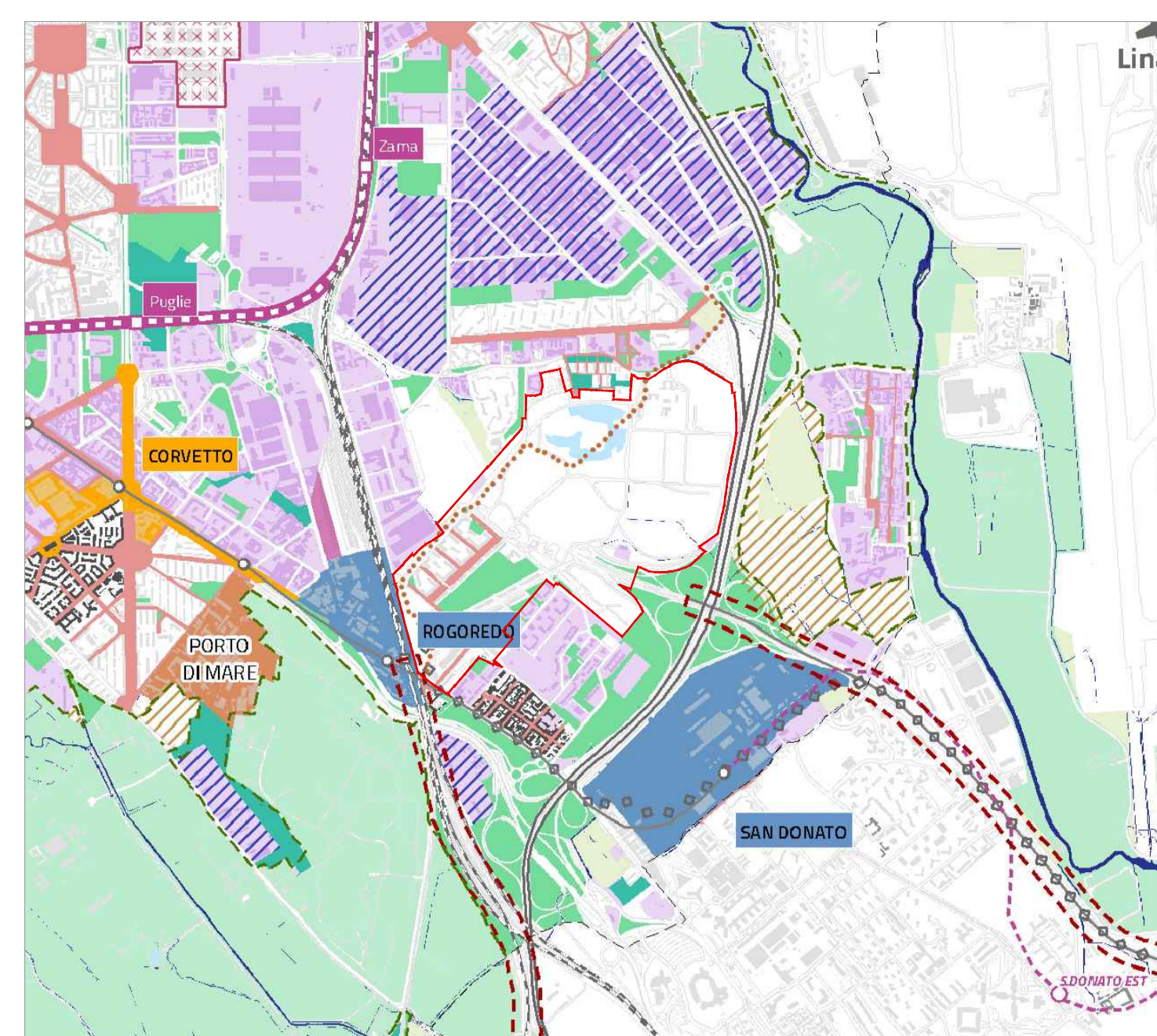
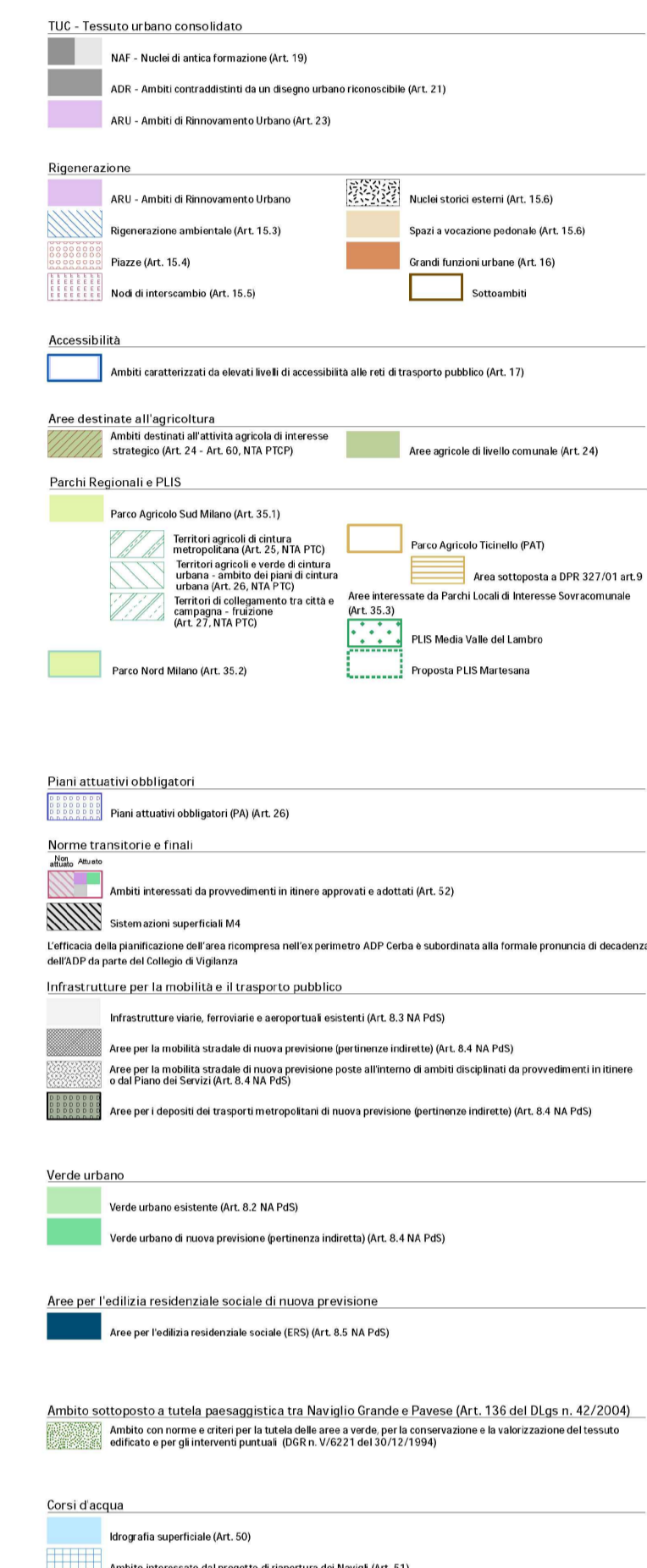
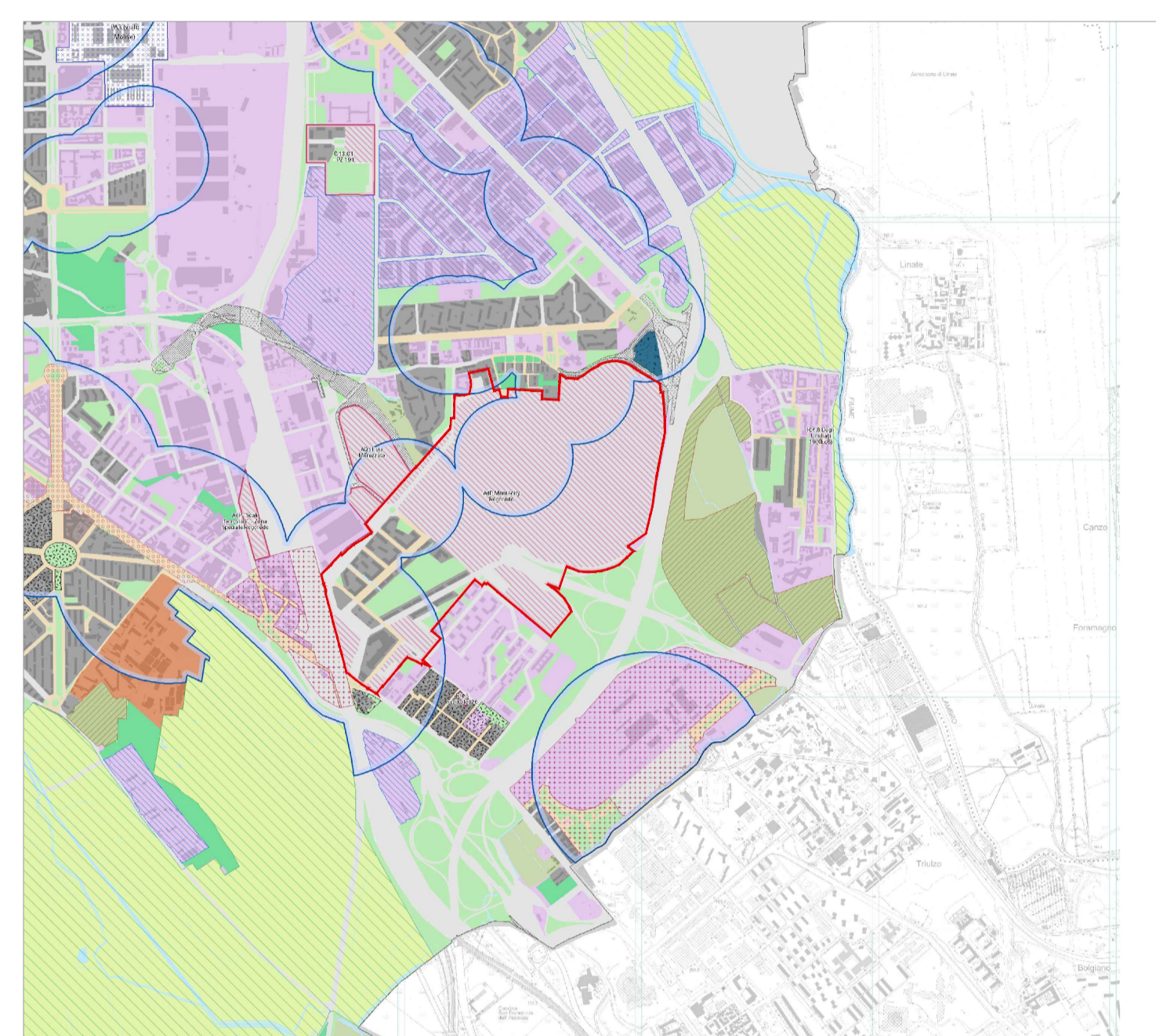


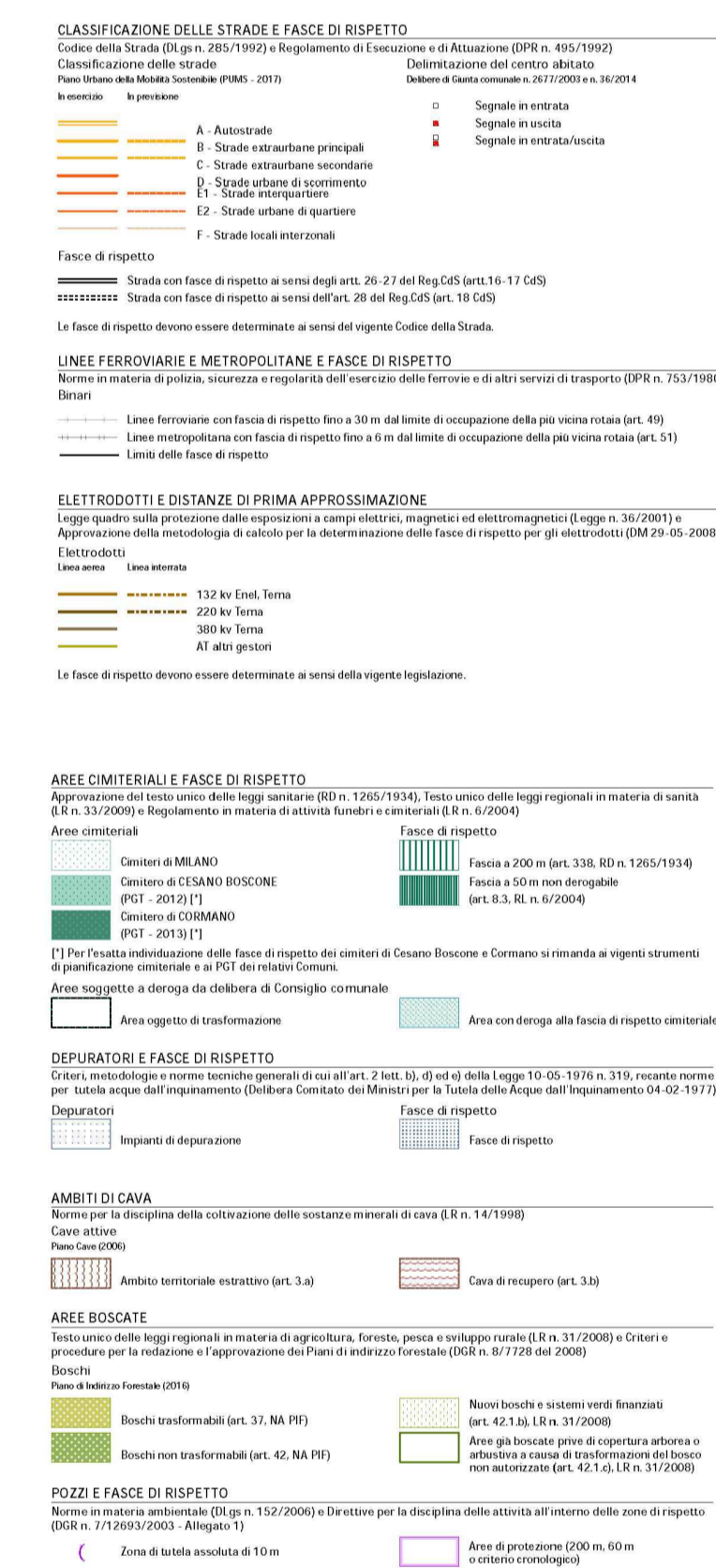
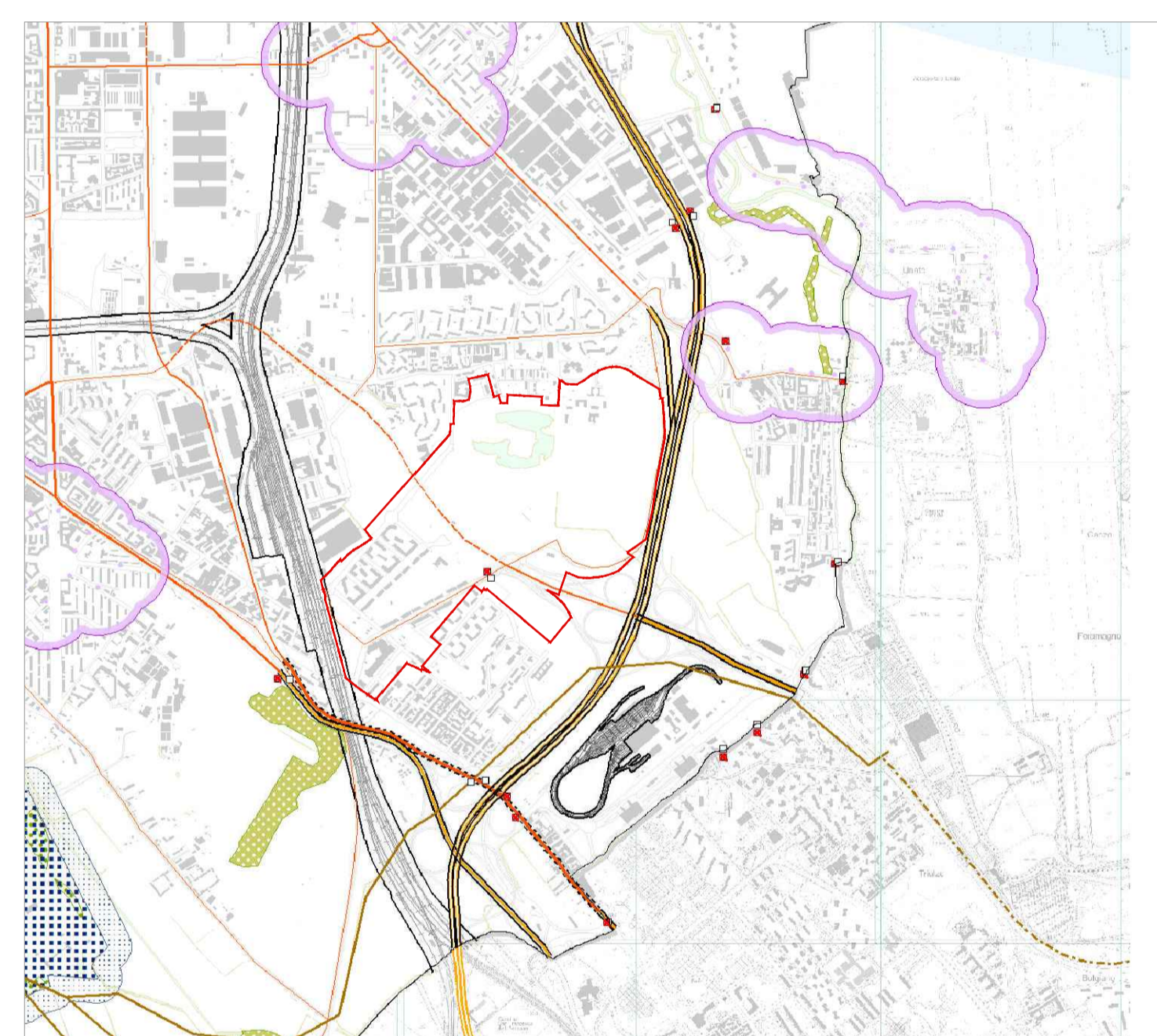
DOCUMENTO DI PIANO - PROGETTO DI PIANO - STRALCIO Tav. D.01



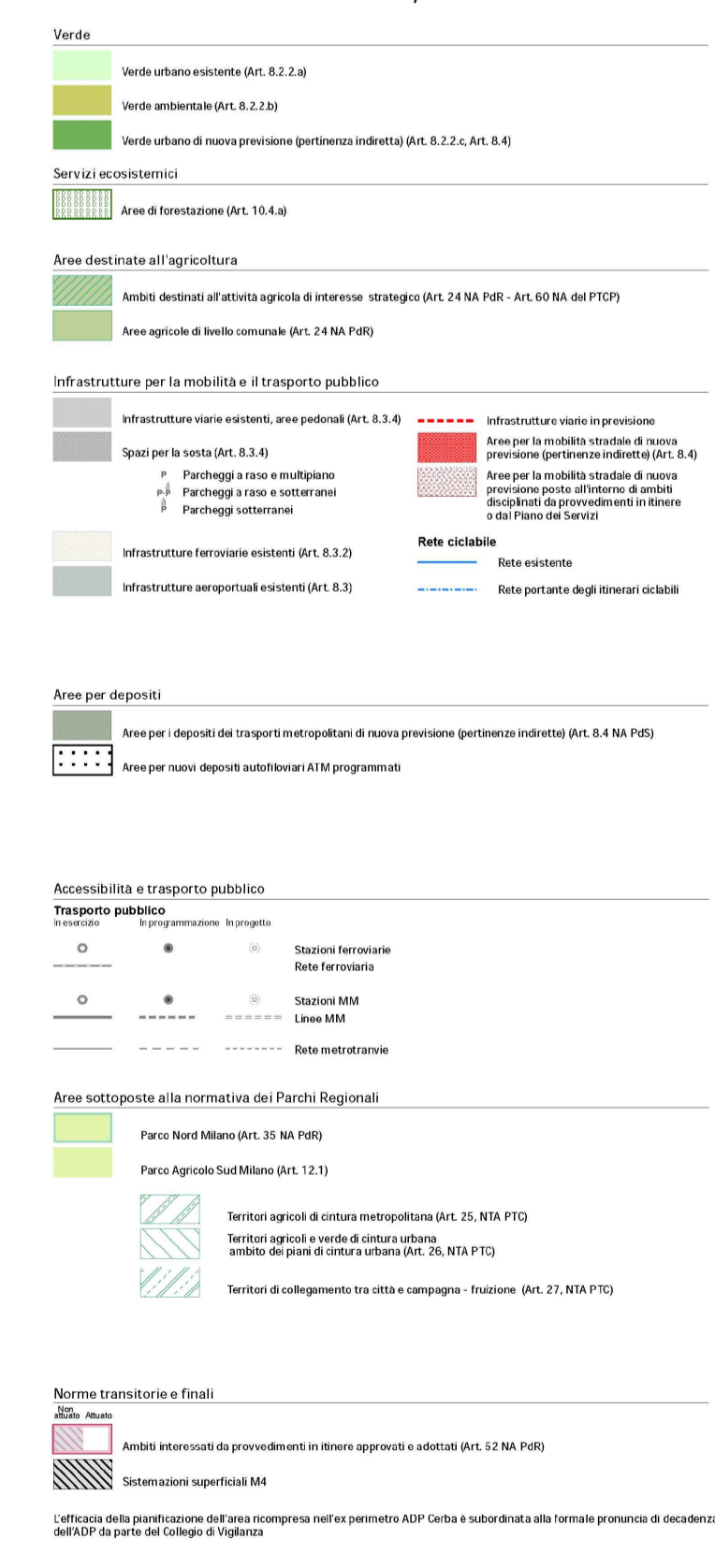
PIANO DELLE REGOLE - INDICAZIONI URBANISTICHE - STRALCIO Tav. R. 02/3



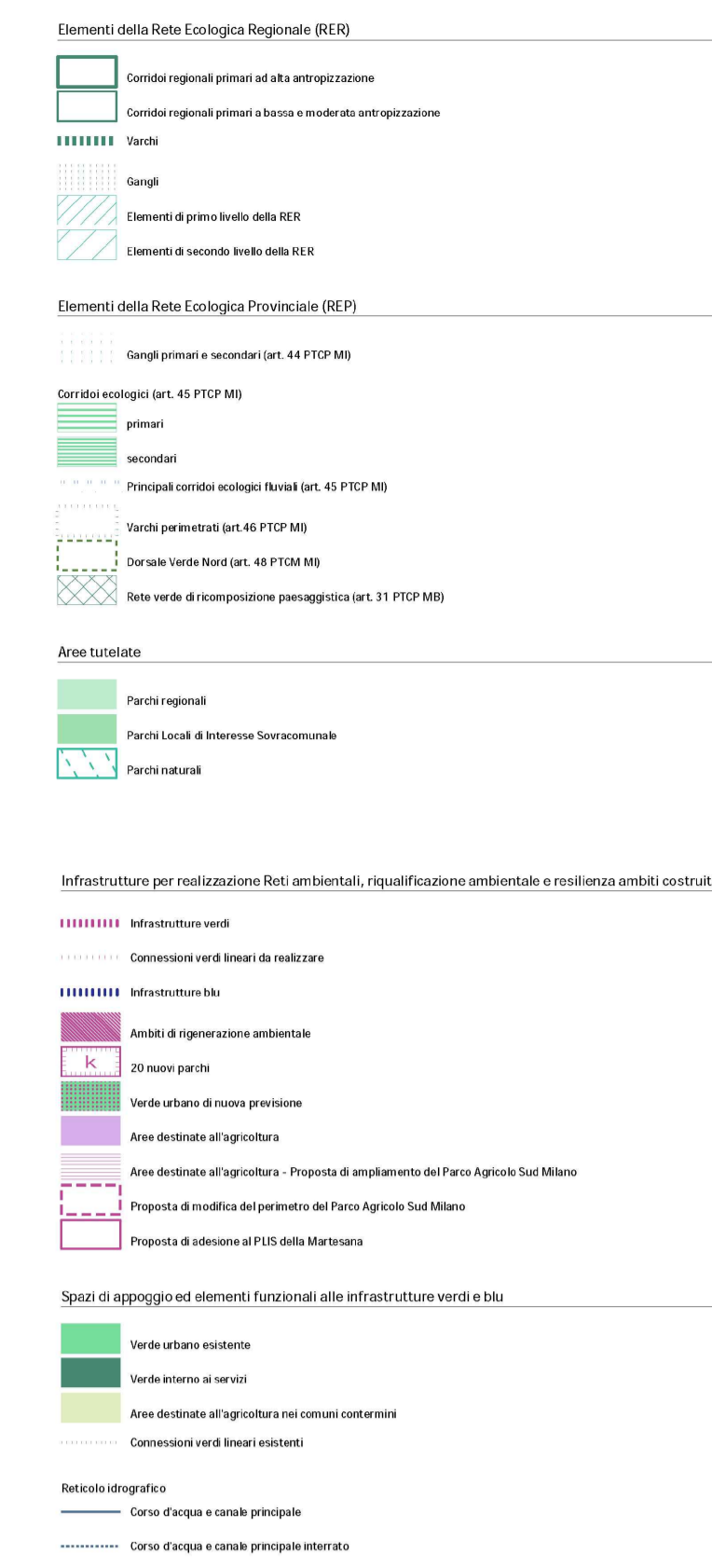
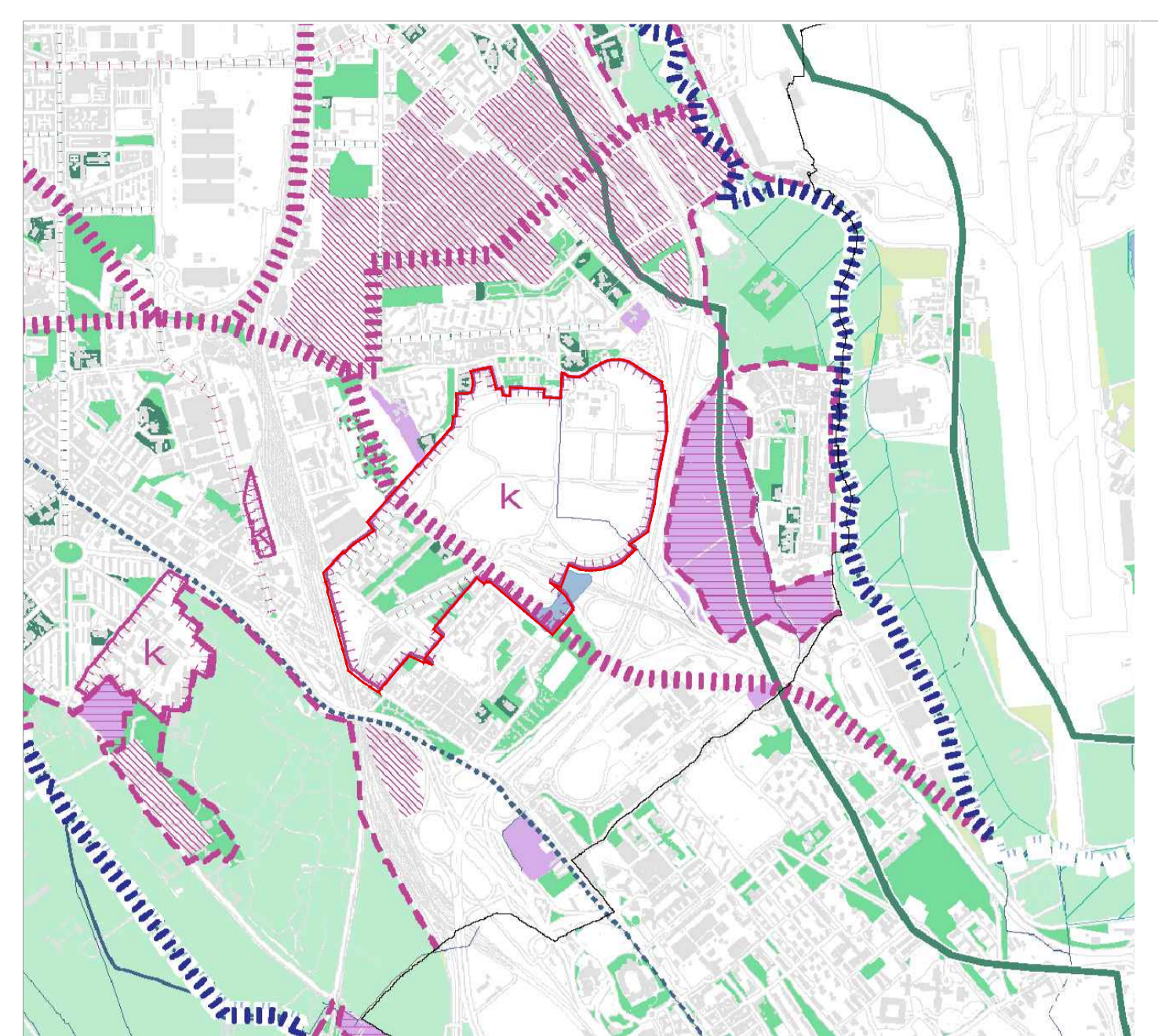
PIANO DELLE REGOLE - VINCOLI AMMINISTRATIVI E PER LA DIFESA DEL SUOLO - STRALCIO Tav. R.05



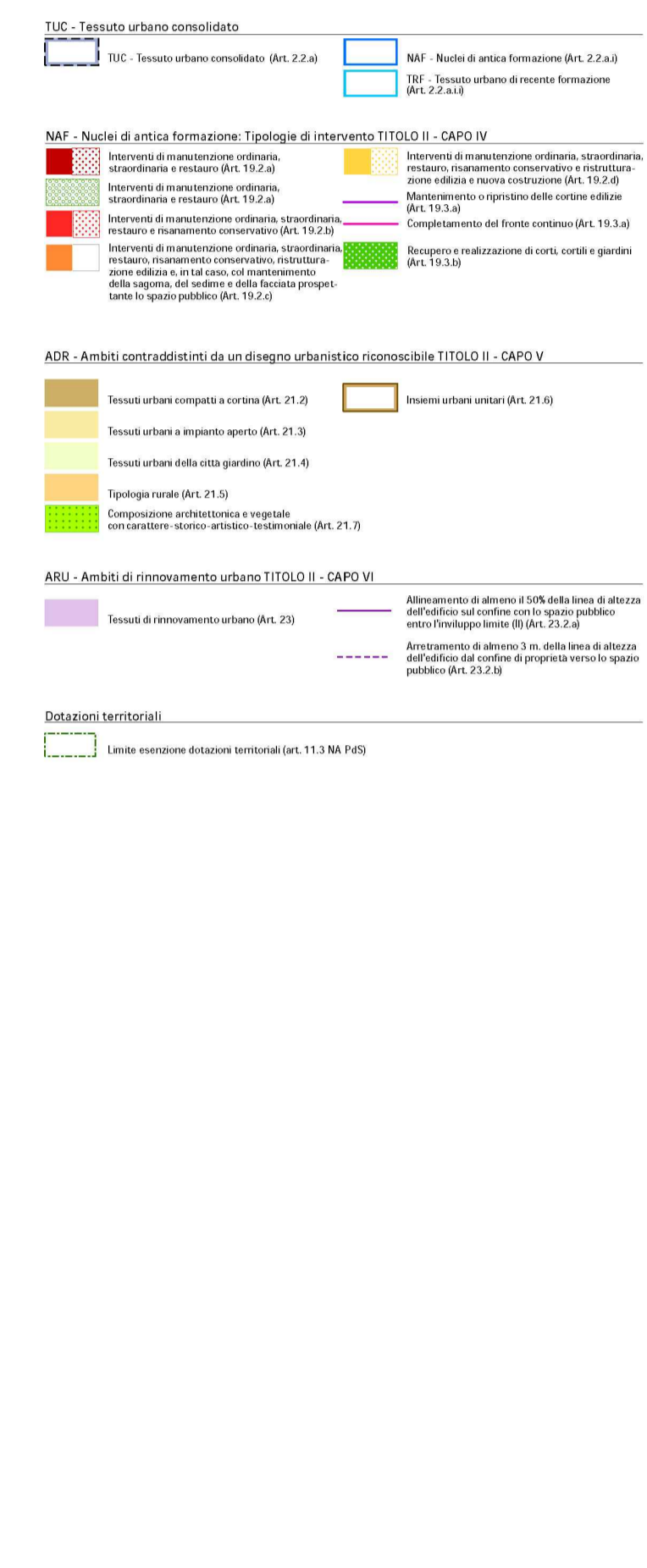
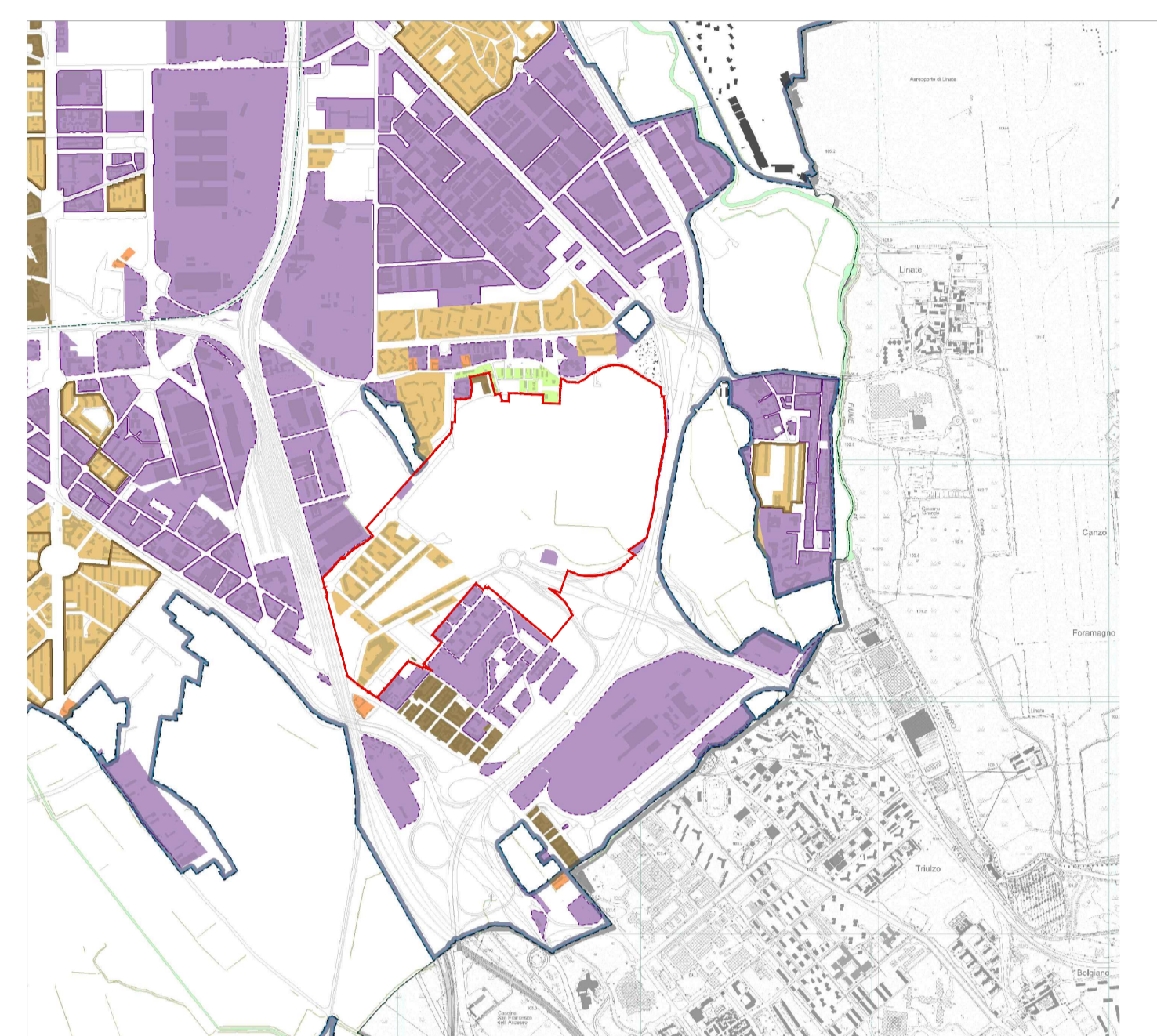
PIANO DEI SERVIZI - IL SISTEMA DEL VERDE URBANO E DELLE INFRASTRUTTURE PER LA MOBILITA' - STRALCIO Tav. S.02/3



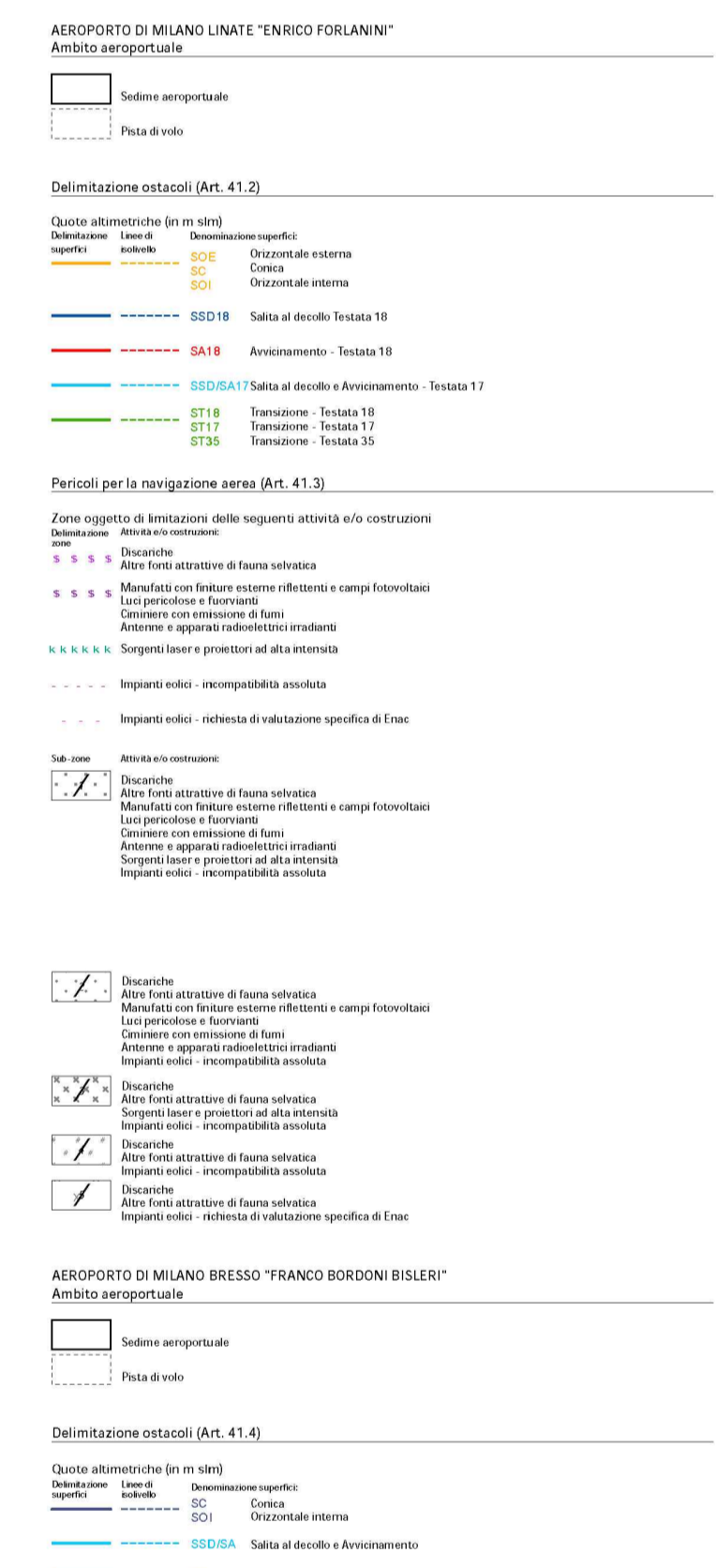
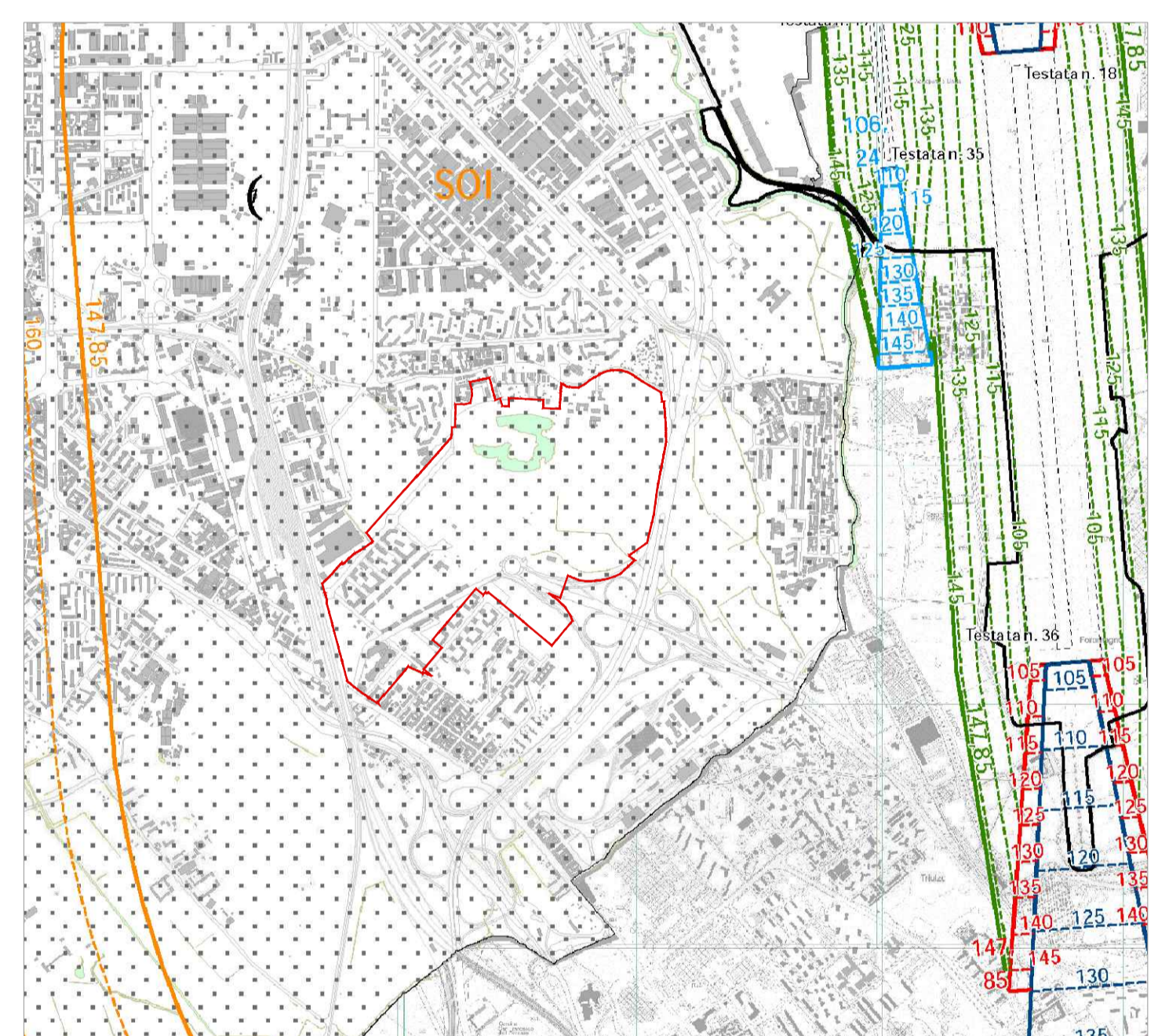
DOCUMENTO DI PIANO - SCHEMA DI RETE ECOLOGICA COMUNALE - STRALCIO Tav. D.03



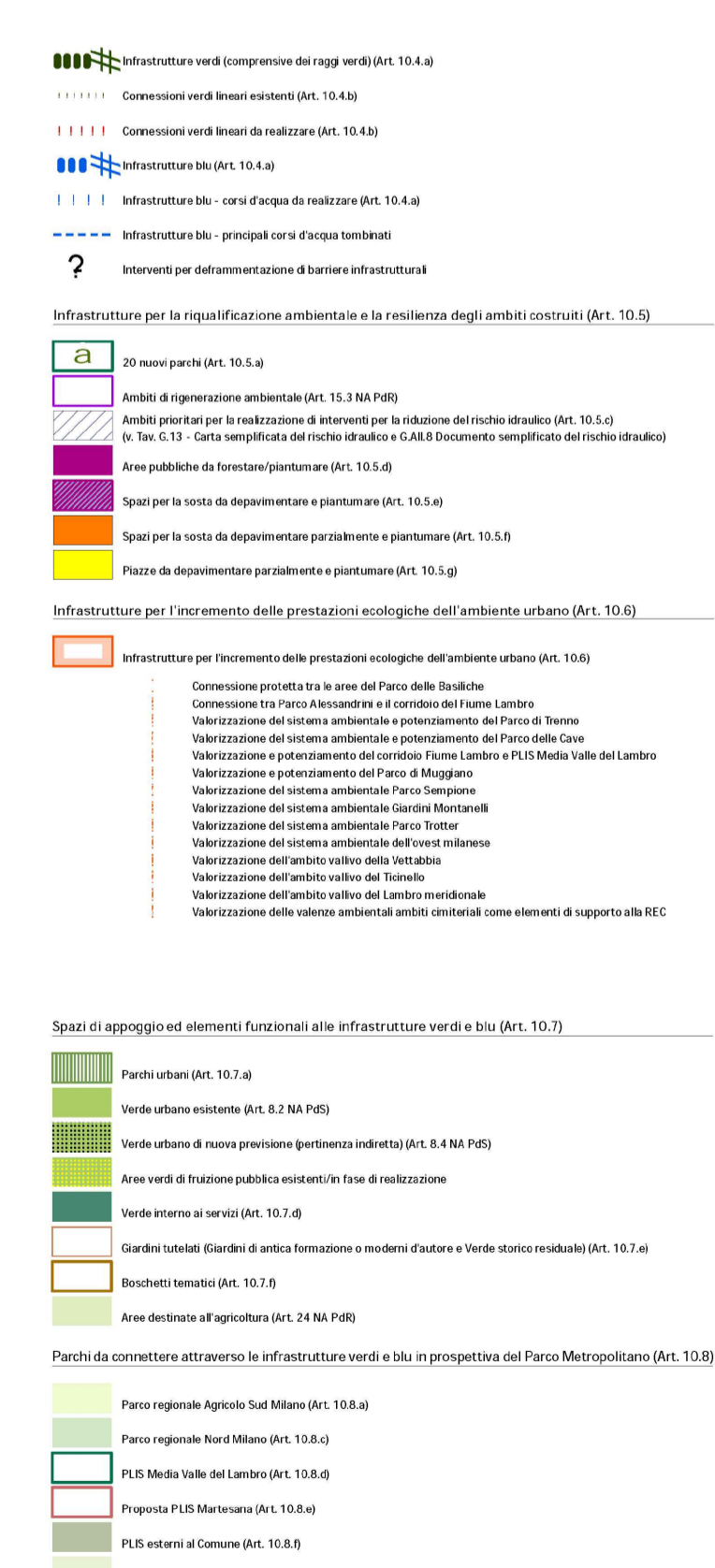
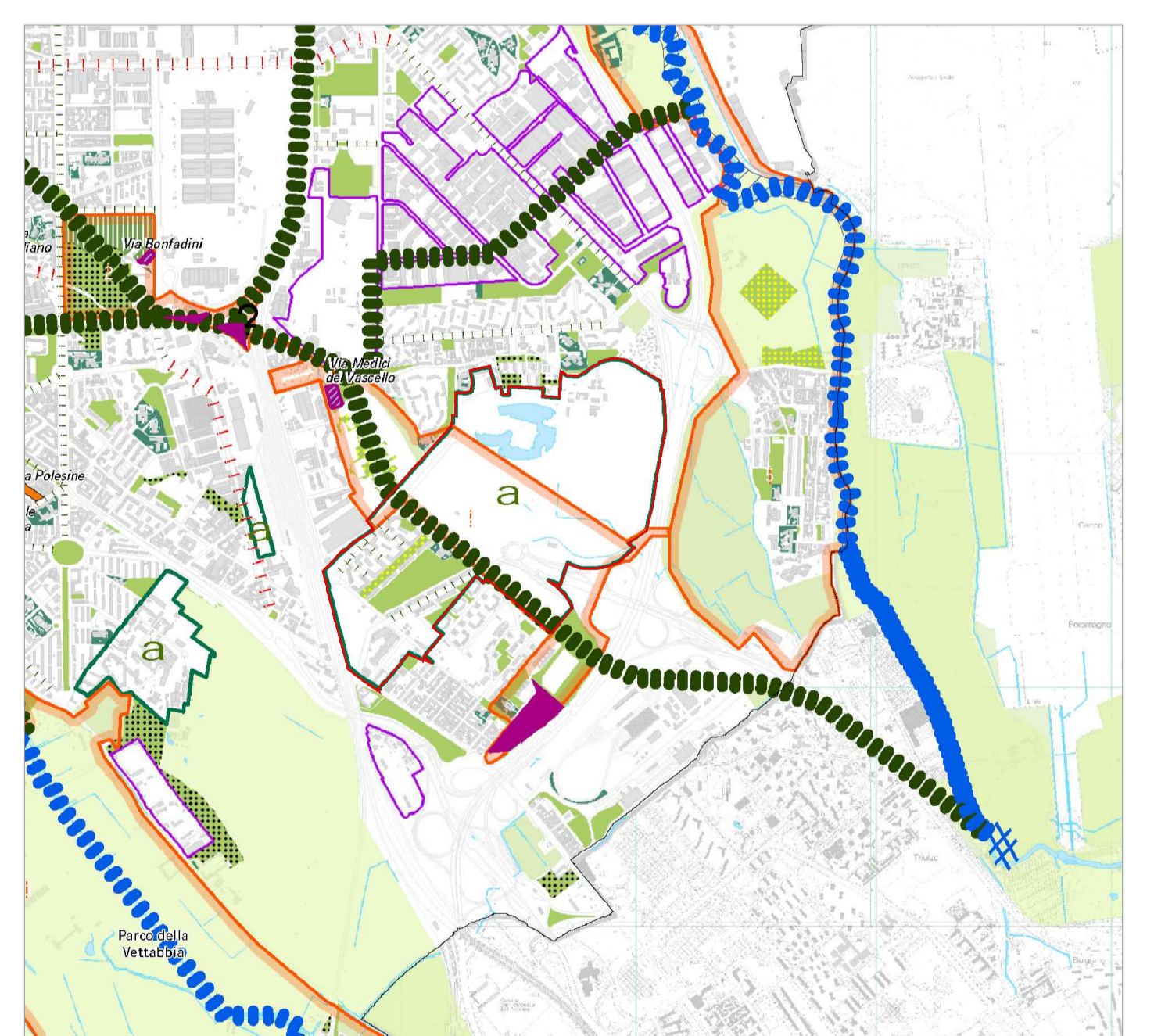
PIANO DELLE REGOLE - INDICAZIONI MORFOLOGICHE - STRALCIO Tav. R. 03/3



PIANO DELLE REGOLE - OSTACOLI E PERICOLI PER LA NAVIGAZIONE ELETTRICA - STRALCIO Tav. R.08



PIANO DEI SERVIZI - INFRASTRUTTURE VERDI E BLU - RETE ECOLOGICA COMUNALE - STRALCIO Tav. S.03



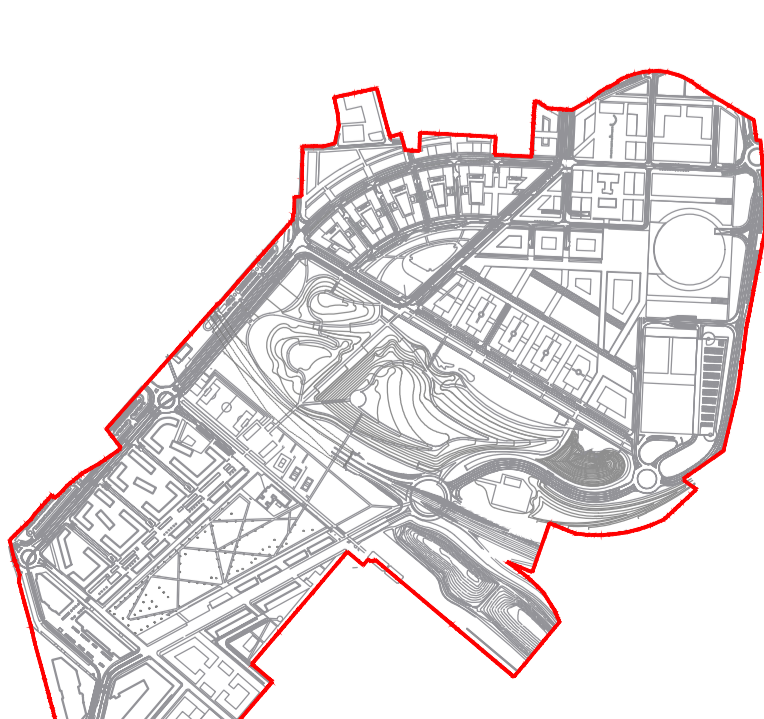
Team di progettazione
Foster + Partners

Architettura Engineering
Belvedere Inzaghi & Partners
GAE Engineering
Maserassociati
Jones Lang Lasalle
J+S
Makno
Manens-Tifs

Milan Ingegneria
Museo della Scienza e della
Tecnologia Leonardo da Vinci
Sigest
Studio Architettura Urbanistica
Paolo Pomodoro
Studio Tecnico Emanuele Morelli
Systematica

Legenda

perimetro del PII



Rev.	DATA	MOTIVAZIONE	Contr.
03	24/03/20	Coordinamento	PP
02	29/10/19	Coordinamento	PP
01	26/07/19	Coordinamento	PP

Proprietà
Milano Santa Giulia S.p.A.
Esselunga S.p.A.

Comune di Milano
PII Montecity - Rogoredo
Proposta definitiva
di variante

Progettista
Inquadramento territoriale
PGT vigente

cod. Aconex
XXX-XXX-XXX-XXXX

scala
N/A

già
Aprile 2020

disegnatore
PP

numerazione
IT03

num. provenienza
MSGPP003

revisione
03